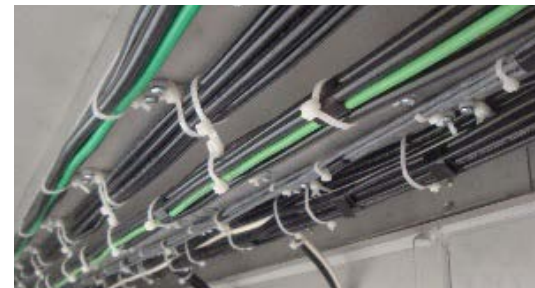




## INTEGRATED CLEANROOM & LABORATORY SOLUTIONS CONTRACTOR PROFILE

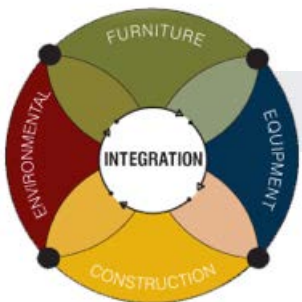


### Project Type: **Modular Roof Top Air Handling Systems**

#### Project Scope:

Work included the turnkey supply and installation of a pre-engineered all modular 8,000CFM capacity air handling system for critical environments application.

The fast track installation provided a system complete with integral DX condenser module, direct fire gas heater module, redundancy and reliability with increased efficiency, low noise via energy efficient fan module with VFD control, pre-filtration module, and building automation controls interface.



### COMBINED ENGINEERING SOLUTIONS – ONE CREATIVE VISION

120 Terence Matthews Crescent, Unit F1, Kanata, Ontario K2M 0J1  
**Ottawa Tel #:** (613) 366-4984 **Toronto Tel #:** (416) 477-4984 **Fax #:** (613) 831-4966  
info@hepaireproducts.com

[www.hepaireproducts.com](http://www.hepaireproducts.com)